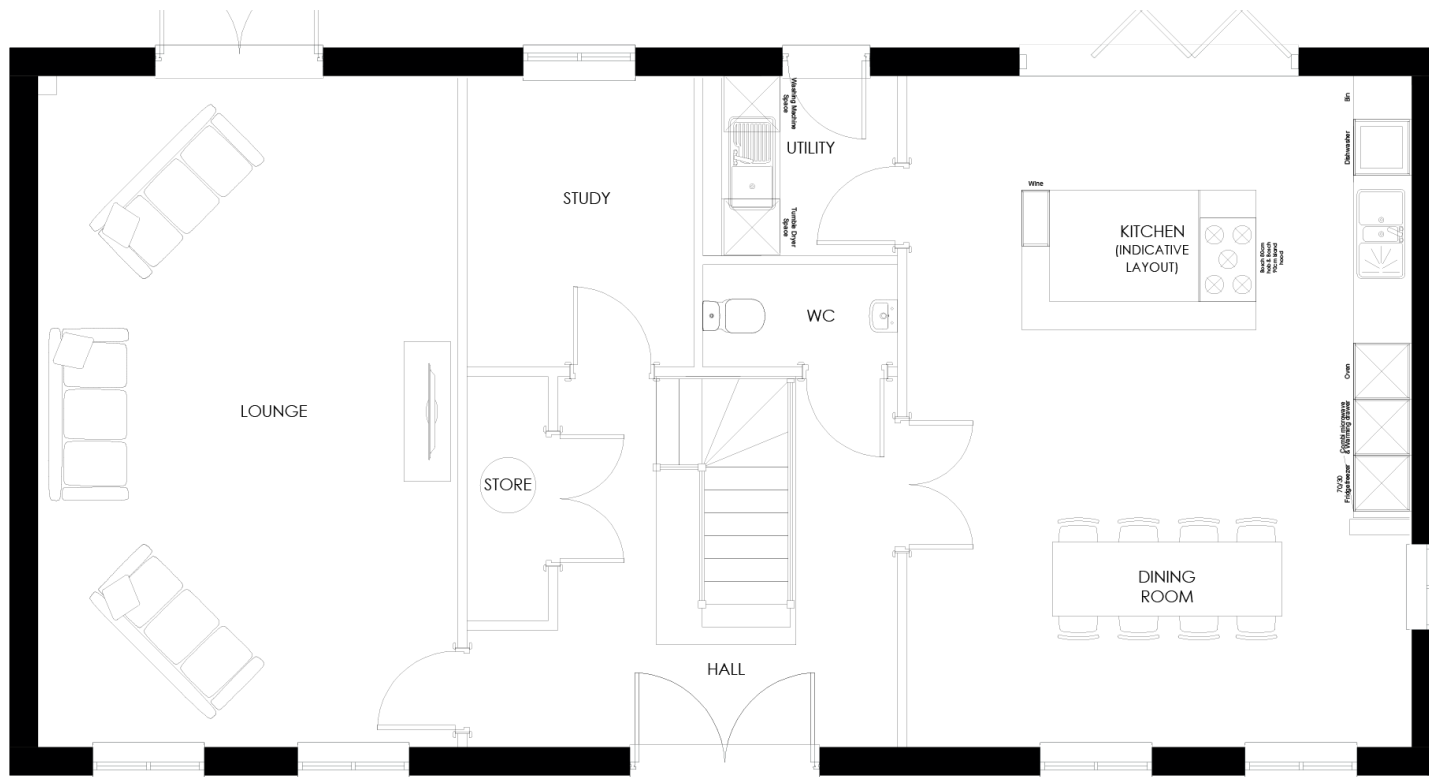


# The Barrowby

## FIVE BEDROOM DETACHED HOUSE



**Lounge**  
7.15m x 4.46m  
23'6" x 14'8"

**Kitchen/Dining Area**  
7.15m x 5.37m  
23'6" x 17'8"

**Study**  
3.07m x 2.38m  
10'1" x 7'10"

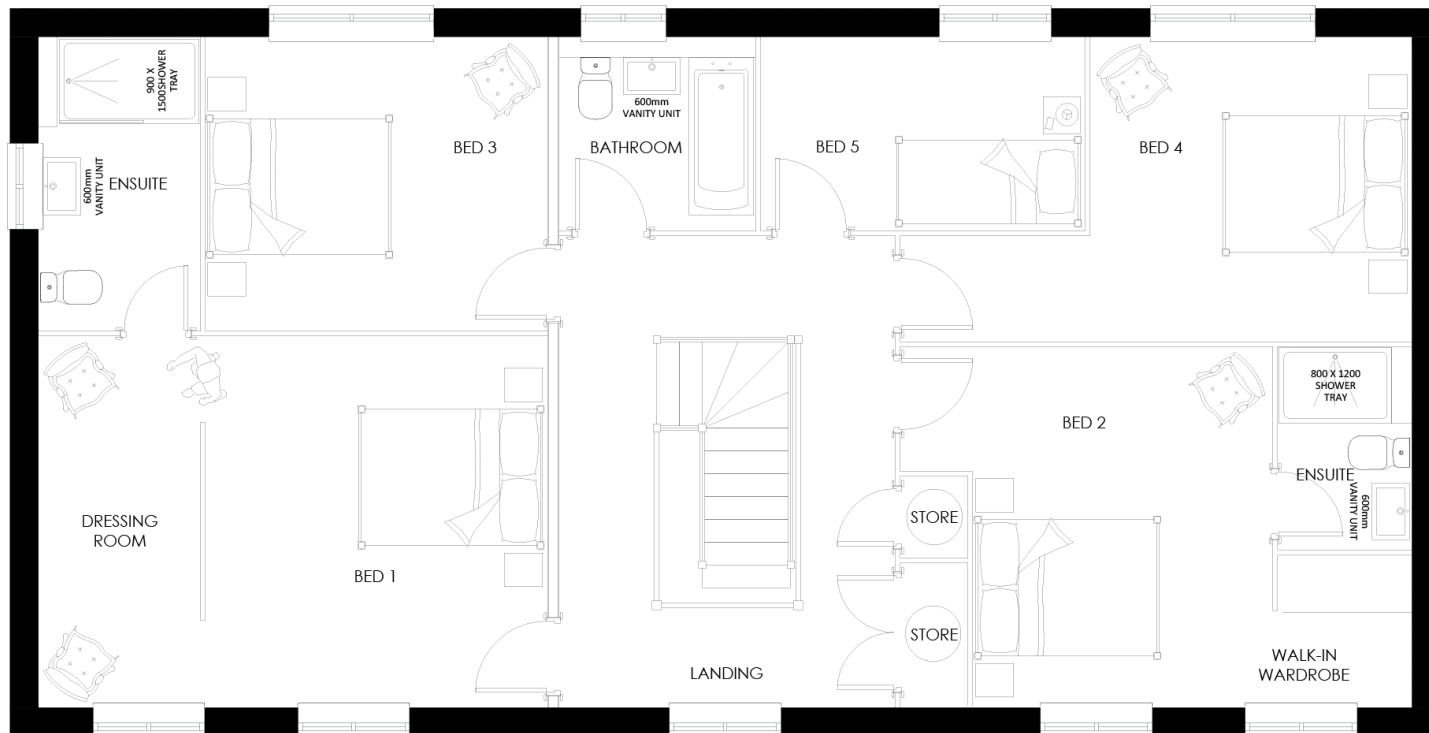
**Utility**  
2.03m x 1.87m  
6'8" x 6'2"

**Cloaks**  
2.02m x 1.05m  
6'8" x 3'5"

**Master Bedroom**  
3.95m x 3.7m  
13' x 12'2"

**En Suite**  
3.12m x 1.7m  
10'3" x 5'7"

**Dressing Room**  
3.95m x 1.7m  
13' x 5'7"



**Bedroom 2**  
4.01m x 3.84m  
13'2" x 12'7"

**En Suite**  
2.16m x 1.36m  
7'1" x 4'6"

**Bedroom 3**  
3.7m x 3.12m  
12'2" x 10'3"

**Bedroom 4**  
5.45m\* x 3.23m  
17'11" x 10'7"  
(\*max width into doorway)

**Bedroom 5**  
3.46m x 2.04m  
11'4" x 6'9"

**Bathroom**  
2.08m x 2.04m  
6'10" x 6'9"

*Please refer to the site plan for confirmation of the plot numbers for this particular house type.*

*The dimensions are correct to within 50mm or 2" but should not be used as a basis for the purchase of furnishings. Individual properties may vary from illustrations shown. Every care has been taken with the information, which has been produced for your guidance only and does not form part of a contract.*