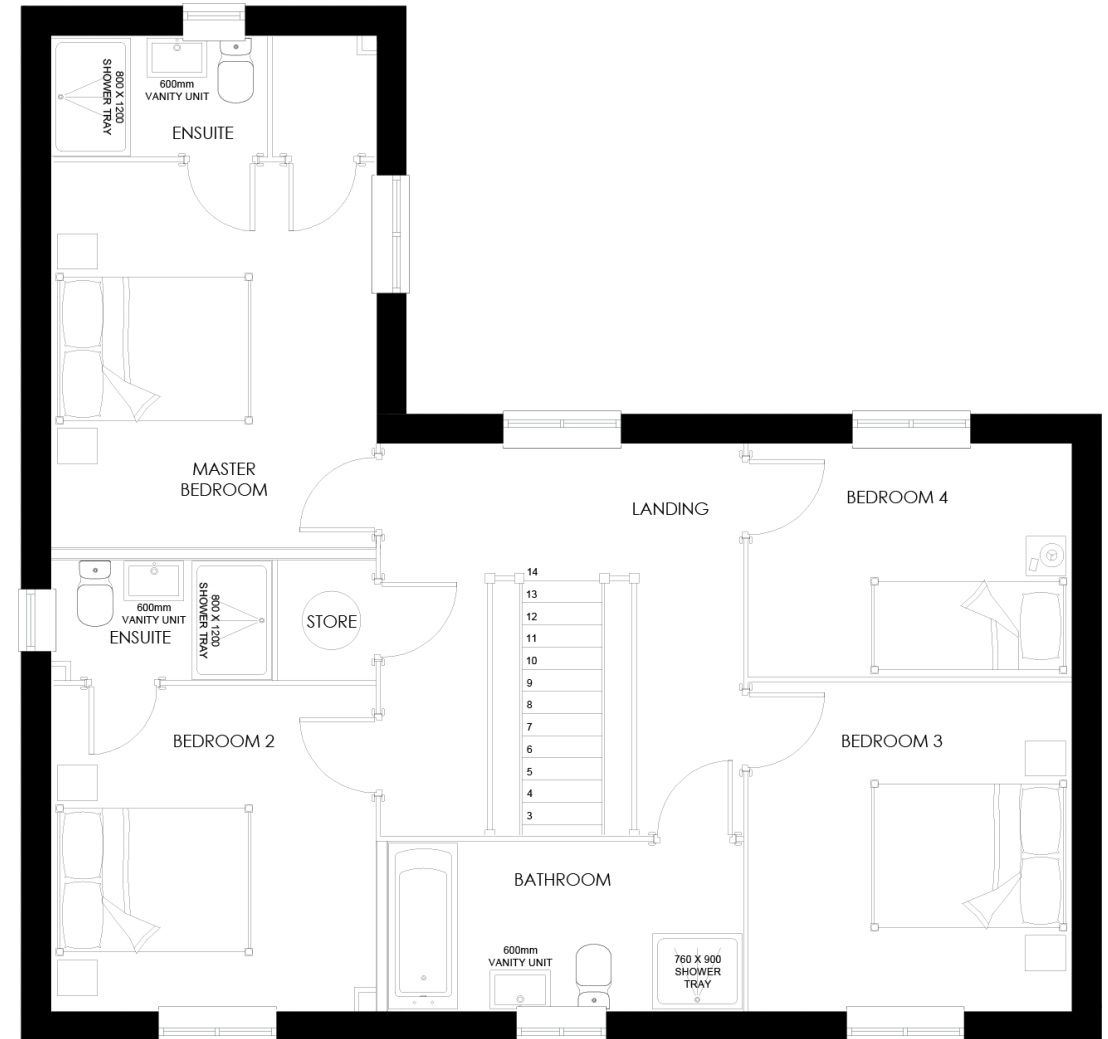
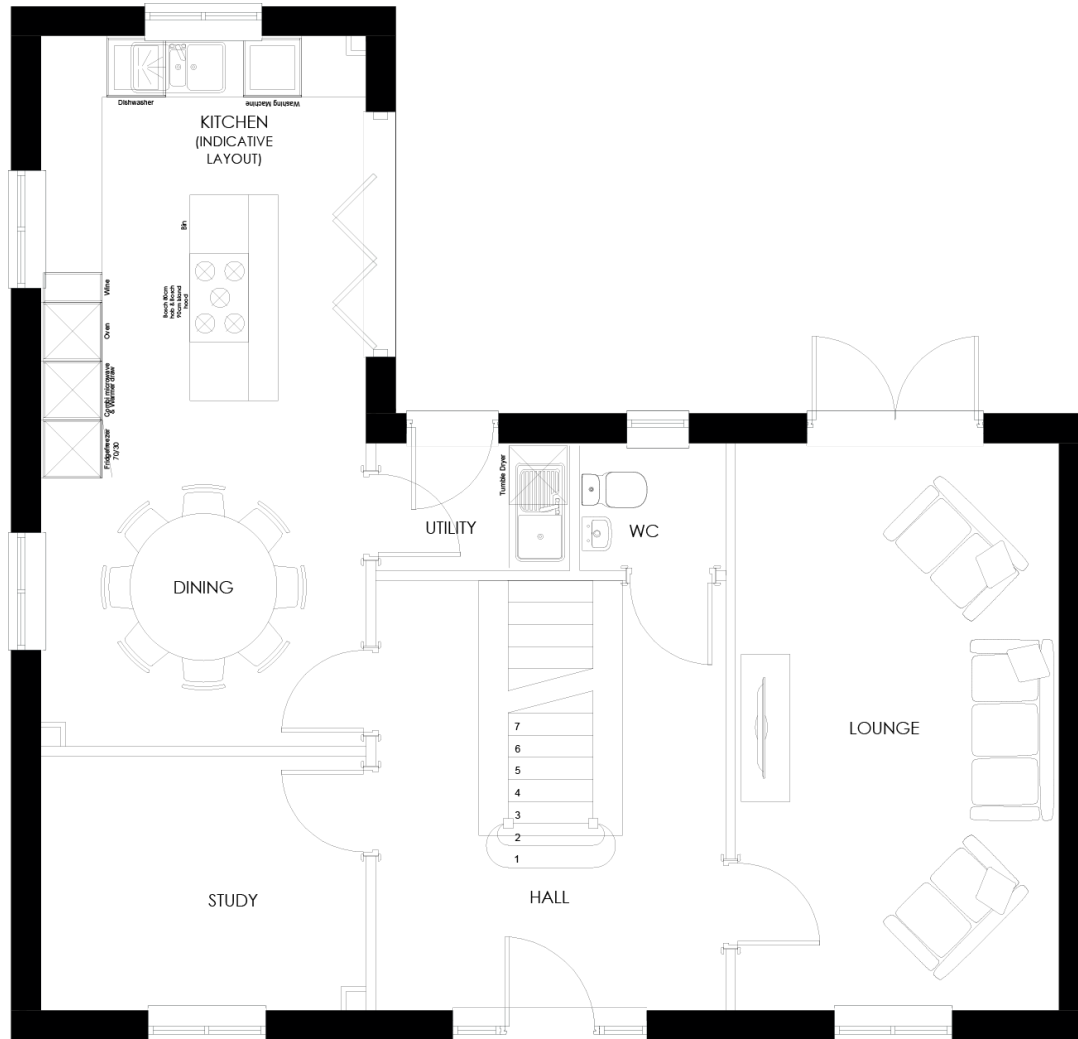


The Humber FOUR BEDROOM DETACHED HOUSE

Please refer to the site plan for confirmation of the plot numbers for this particular house type.



Lounge
5.74m x 3.25m
18'10" x 10'8"

Kitchen/Dining Area
7.21m x 3.27m
23.8' x 10'9"

Utility
1.93m x 1.25m
6'4" x 4'1"

Master Bedroom
3.9m x 3.27m
12'10" x 10'9"

En Suite
2.17m x 1.18m
7'1" x 3'11"

Bedroom 2
3.28m x 3.27m
10'9" x 10'9"

Study
3.27m x 2.55m
10'9" x 8'4"

Cloaks
1.44m x 1.25m
4'9" x 4'1"

Bedroom 3
3.32m x 3.25m
10'11" x 10'8"

Bedroom 4
3.25m x 2.34m
10'8" x 7'8"

Bathroom
3.59m x 1.7m
11'10" x 5'7"

The dimensions are correct to within 50mm or 2" but should not be used as a basis for the purchase of furnishings. Individual properties may vary from illustrations shown. Every care has been taken with the information, which has been produced for your guidance only and does not form part of a contract.