

# The Tay

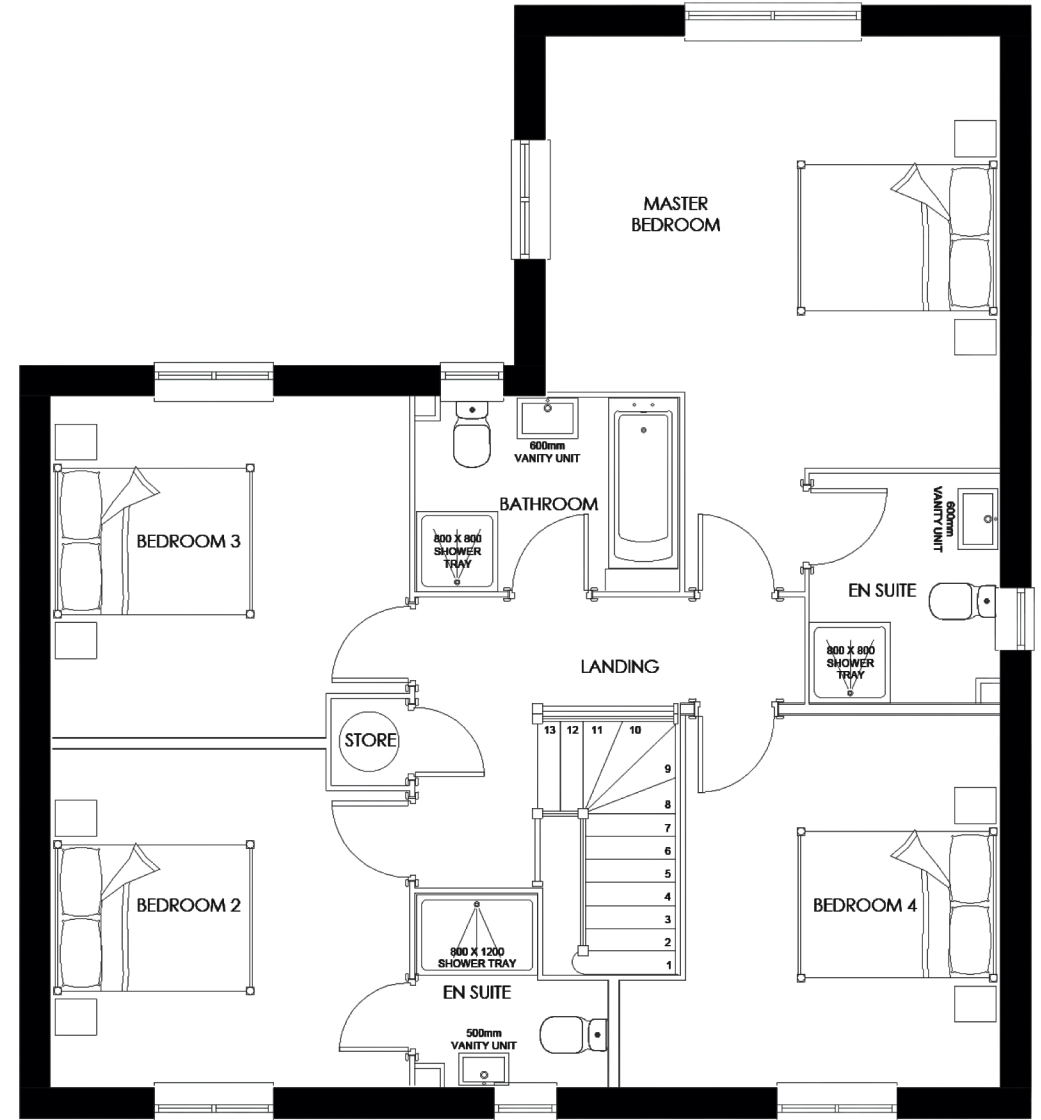
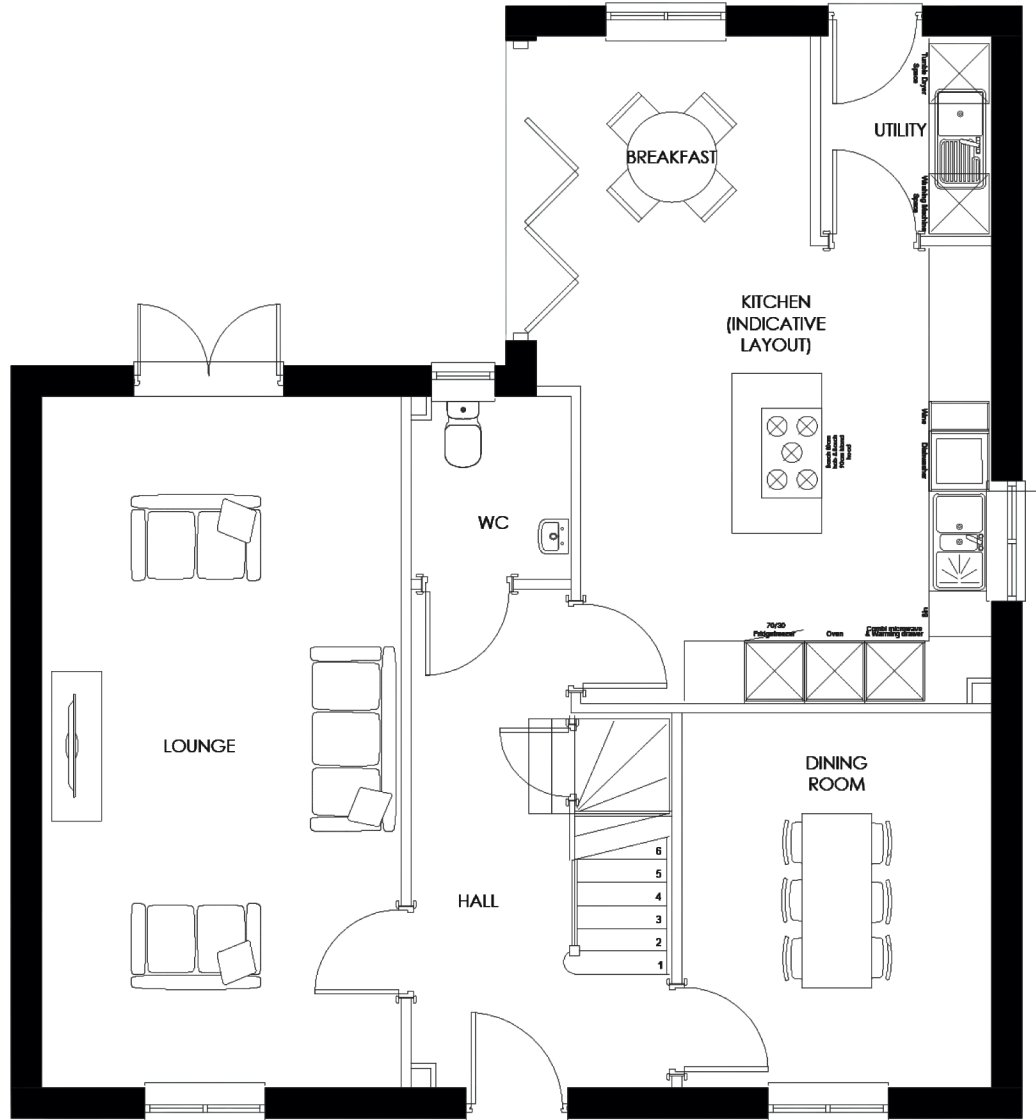
FOUR BEDROOM DETACHED HOUSE



# The Tay

## FOUR BEDROOM DETACHED HOUSE

Please refer to the site plan for confirmation of the plot numbers for this particular house type.



**Lounge**  
6.89m x 3.55m  
22'8" x 11'8"

**Kitchen/Breakfast**  
6.67m x 4.06m  
21'11" x 13'4"

**Utility**  
1.95m x 1.66m  
6'5" x 5'6"

**Master Bedroom**  
4.51m x 4.28m  
14'10" x 14'1"

**En Suite**  
2.27m x 1.87m  
7'5" x 6'2"

**Bedroom 2**  
3.56m x 3.37m  
11'9" x 11'11"

**En Suite**  
1.91m x 1.86m  
6'3" x 6'1"

**Dining Room**  
3.7m x 3.05m  
12'2" x 10'

**Cloaks**  
1.78m x 1.54m  
5'10" x 5'1"

**Bedroom 3**  
3.56m x 3.39m  
11'9" x 11'2"

**Bedroom 4**  
3.82m x 3.74m  
12'7" x 12'3"

**Bathroom**  
2.58m x 1.92m  
8'6" x 6'4"

The dimensions are correct to within 50mm or 2" but should not be used as a basis for the purchase of furnishings. Individual properties may vary from illustrations shown. Every care has been taken with the information, which has been produced for your guidance only and does not form part of a contract.