

What is Carbon Monoxide?

Carbon Monoxide is a colourless, odourless, tasteless, poisonous gas that can kill very quickly.

What causes Carbon Monoxide to leak?

Carbon monoxide is produced when fuels such as gas, oil, coal and wood do not burn fully.

Burning charcoal, running cars and the smoke from cigarettes also produce carbon monoxide gas.

Gas, oil, coal and wood are sources of fuel used in many household appliances, including: boilers, gas fires, central heating systems, water heaters, cookers and open fires.

It is possible to have some background Carbon Monoxide in your home without it being enough to trigger an alarm.

The best way to find this out is to do an AudioLINK Data Extraction report from any Aico Carbon Monoxide Alarm via the AudioLINK App on your smartphone.

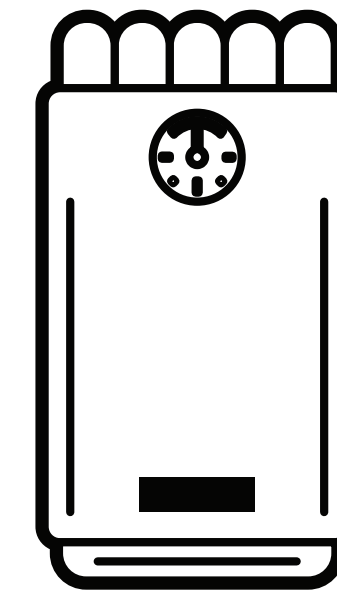
AudioLINK can also tell you things such as the sensor status and battery life, to find out more, visit our AudioLINK page.

How does **AudioLINK** work?
Real time facts... Real time action



3 simple steps to data extraction

Find out more at www.aico.co.uk/audioLINK



Each year,

4,000

are treated at A&E due to Carbon Monoxide poisoning*

*NHS England Reference: 170048P, 1st April 2019

KEEP CONNECTED



@aico_ltd



@Aico Ltd



@Aico_Limited



@AicoLimited



To sign up to our newsletter please visit
www.aico.co.uk/newsletter

To keep up to date with our blog please visit
www.aico.co.uk/techhub

Did you know...

Every year there are around 60 deaths from accidental Carbon Monoxide poisoning in England and Wales

Carbon Monoxide is produced when fuels such as gas, oil, coal and wood do not burn fully

Incorrectly installed, poorly maintained or poorly ventilated household appliances, such as cookers, heaters and central heating boilers, are the most common causes of accidental exposure to Carbon Monoxide

Source:
* www.nhs.uk/ *

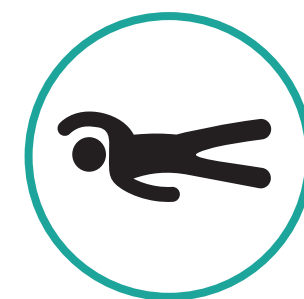


WHY WOULD YOU RISK IT?

HAVE YOU...

- TESTED YOUR DETECTORS AT LEAST ONCE THIS MONTH?
- MADE SURE ALL YOUR VENTILATION AREAS ARE CLEAR?
- HAD YOUR COOKERS, HEATERS & BOILERS SERVICED?
- SCHEDULED AN ANNUAL MAINTENANCE CHECK?

Would you know the **6** symptoms of Carbon Monoxide poisoning?



Unconsciousness



Collapse



Dizziness



Breathlessness



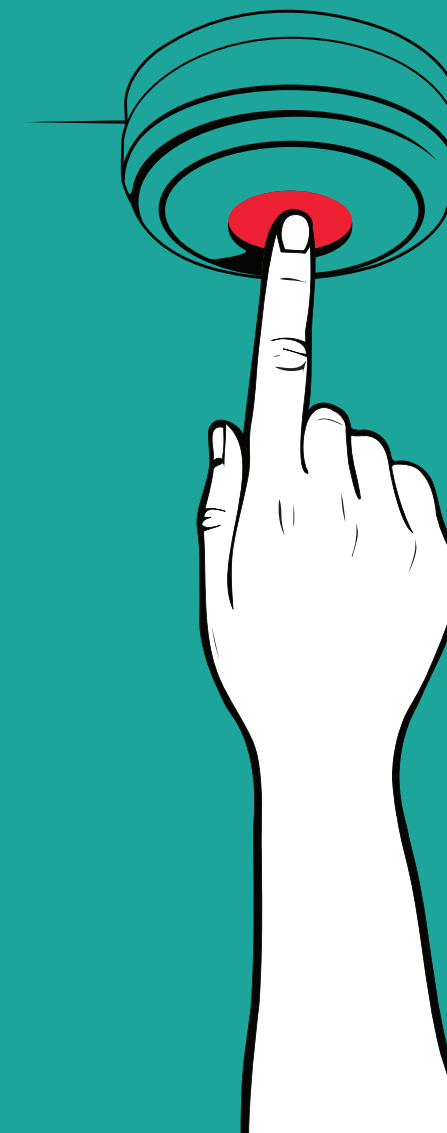
Headache



Nausea

PUSH THAT TEST BUTTON

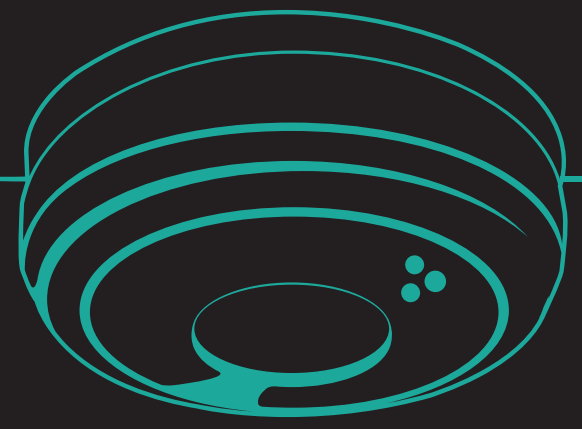
#ALARMSSAVELIVES



With Aico, it's COVERED.

For professional quality, innovation and service, Aico Carbon Monoxide Alarms offer the complete package. Their advanced, high performance technology - with **AudioLINK™** data extraction and **SmartLINK®** wireless interconnection - is backed by rigorous 4-stage testing, comprehensive technical support and free training on selection, installation and maintenance.





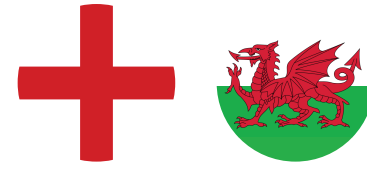
CARBON MONOXIDE IS A
**SILENT
KILLER**

WHY WOULD YOU
TAKE THE RISK?

STAY PROTECTED. FIT A
CARBON MONOXIDE ALARM

Carbon Monoxide Building Regulations

England and Wales
Document J



Requires a BS EN 50291 Kitemarked Carbon Monoxide alarm to be fitted when any new or replacement solid-fuel burning appliance is installed. Examples of solid fuel burning appliances are wood burners, open fires etc.

Carbon Monoxide alarms should be fitted in the room with the appliance.

Alarms can be mains or battery powered. If the alarm is battery powered then the battery should last for the life of the alarm.



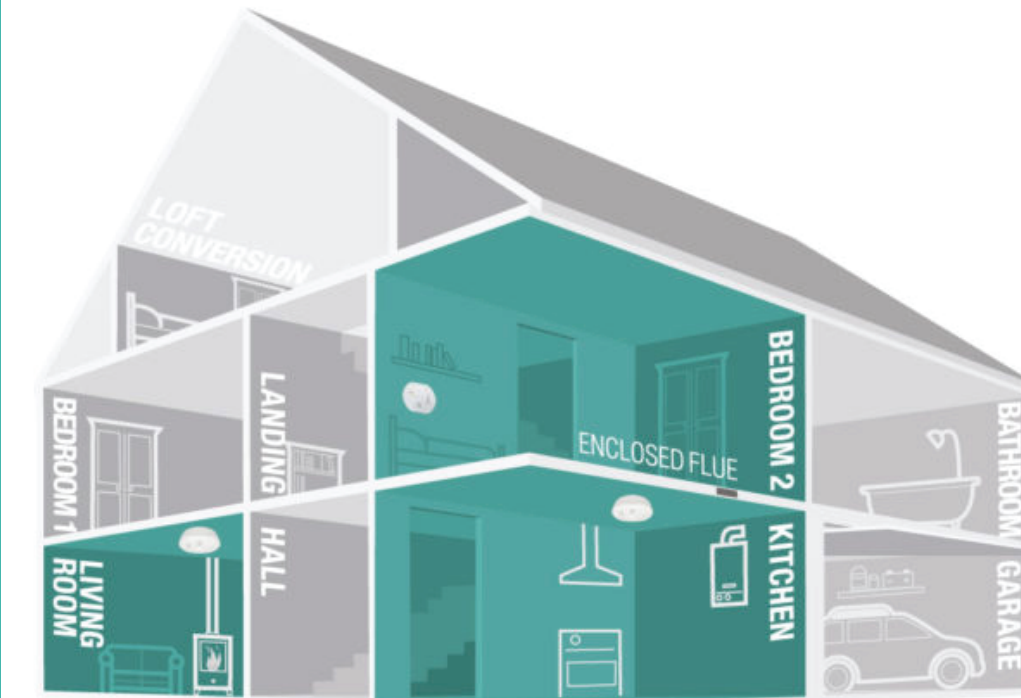
Scotland
Technical Handbook



Requires a BS EN 50291 Kitemarked Carbon Monoxide alarm to be fitted when any new or replacement fuel burning appliance is installed (except cookers). This covers any fuel burning appliance, including those that burn gas, oil, coal and wood.

Carbon Monoxide alarms should be fitted in:

- The room with the appliance or, if it is an enclosed boiler, just outside the enclosure.
- Any room that has a flue running through it.
- Alarms can be mains or battery powered. If the alarm is battery powered then the battery should last for the life of the alarm.



Northern Ireland
Technical Booklet L



Requires a BS EN 50291 Kitemarked Carbon Monoxide alarm to be fitted when any new or replacement fuel appliance is installed (except cookers). This covers any fuel burning appliance, including those that burn gas, oil, coal and wood.

Carbon Monoxide alarms should be fitted in:

- The room with the appliance or, if it is an enclosed boiler, just outside the enclosure.
- Alarms can be mains or battery powered. If the alarm is battery powered, then the battery should last for the life of the alarm.



If you would like more advice on how to site alarms effectively throughout a property, visit our page on alarm siting. If you would like more information on the standards and regulations for a property outside of these guidelines please contact our Technical Team, technical@aico.co.uk.

an Company